

# CROCE

クローチェ®

2/28 2/46 2/60

100% MERINO WOOL  
(防縮ウール)

<クローチェ>

オーストラリア産ファインメリノを使用した防縮加工の梳毛糸です。  
厳選された素材ならではの発色性の良さと光沢を持ち、  
上質で高級感のある着心地の良い製品に仕上がります。

<カラーストック>

2/28 ・ 2/60 30色

2/46 60色

【19.5 $\mu$ 】

オーストラリアンメリノ防縮加工



# CROCE

2/28 2/46 2/60

100% MERINO WOOL

46番双糸にて全60色のストック販売です。

28番・60番双糸については★印のみのストック販売となっております。



★920FF  
OFF



070311  
LEMON



110102  
SAFFRON



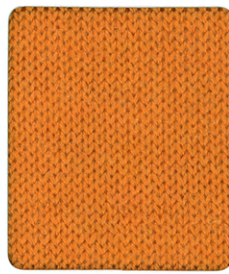
960101  
LT.PINK



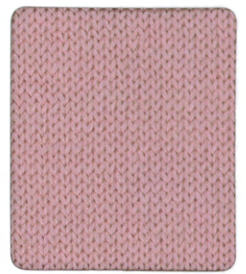
★960001  
WHITE (蛍光晒)



050303  
CANARY



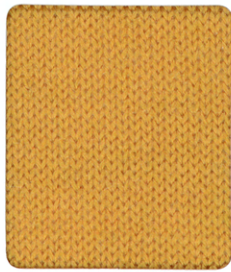
★990105  
ORANGE



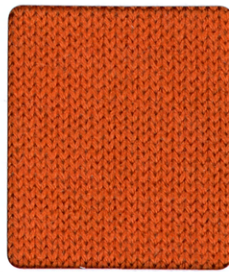
050105  
ROSE



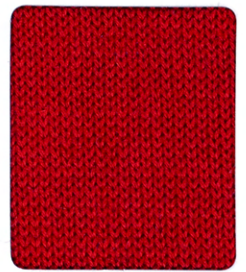
★0992  
IVOLY



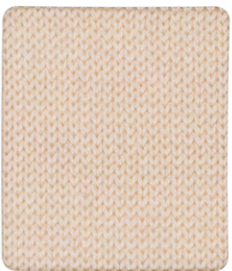
★050305  
MUSTARD



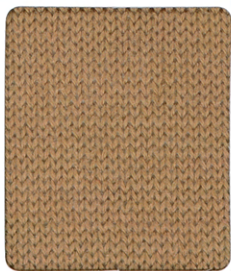
090123  
BRICK



960104  
SIGNAL RED



★070951  
BEIGE



070953  
CAMEL



970907  
CHOCOLATE



★960105  
RED



★99NERO  
BLACK



★050909  
DK.VIOLET

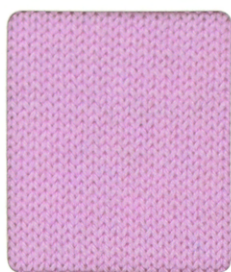


★050905  
DK.CHERRY

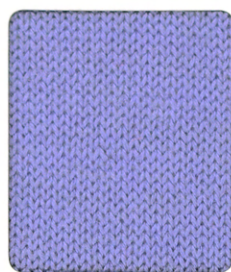


070112  
WINE





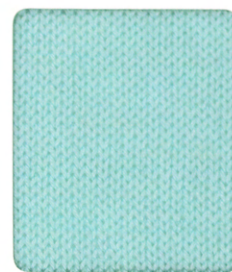
970101  
LILAC



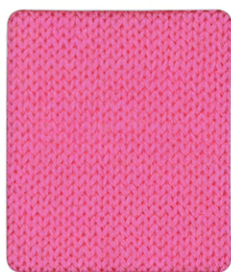
070611  
LAVENDER



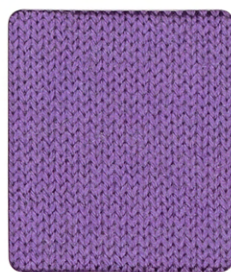
960701  
BABY BLUE



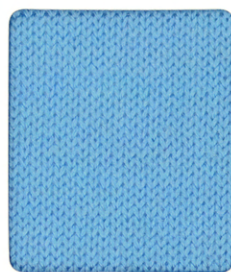
090722  
ICE GREEN



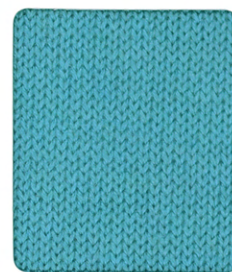
970102  
PINK



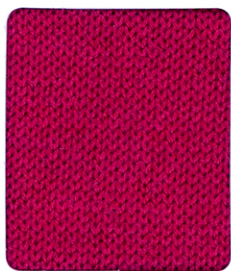
070612  
MAUVE



110701  
SKY BLUE



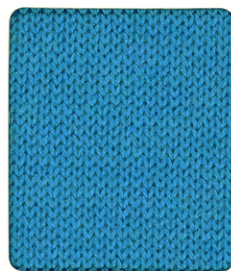
050703  
SKY



090625  
CHERRY



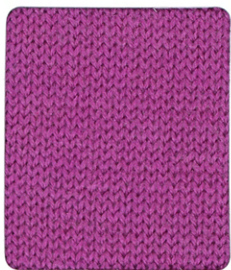
★980605  
PLUM



050702  
OCEAN



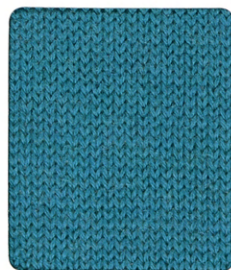
070705  
IRON GREEN



★960603  
VIOLET



★960705  
DEEP BLUE



★050704  
P.GREEN



960503  
BOTTLE GREEN



★070613  
PURPLE



★960706  
NAVY

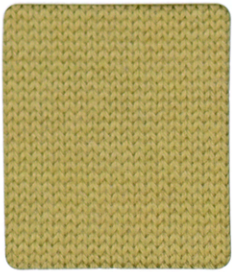


110503  
FOREST GREEN

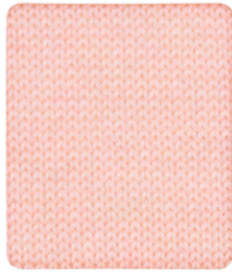


★050505  
OIL

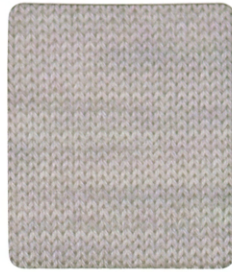




090521  
LIME



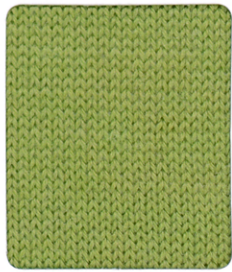
090124  
BABY PINK



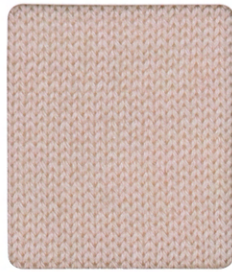
★4002KY  
PINK BEIGE



★5001MF  
S.GRAY



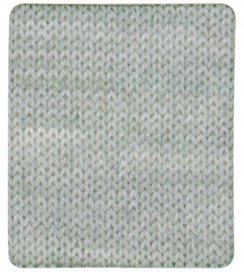
★980502  
TEE GREEN



960902  
PEACH



★4007KY  
OATMEAL



★5003MF  
LT.GRAY



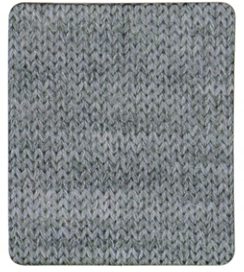
070511  
ARMY



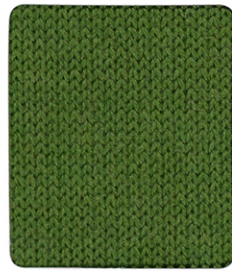
★960904  
BISCUIT



★4012KY  
WOOD



★5005MF  
M.GRAY



960502  
MOSS GREEN



960907  
BROWN



★4067KY  
MOCHA



★5007MF  
DK.GRAY



070512  
DRAB



★050908  
DK.BROWN



★4098KY  
UMBER



★5008MF  
CHARCOAL